



---

---

---

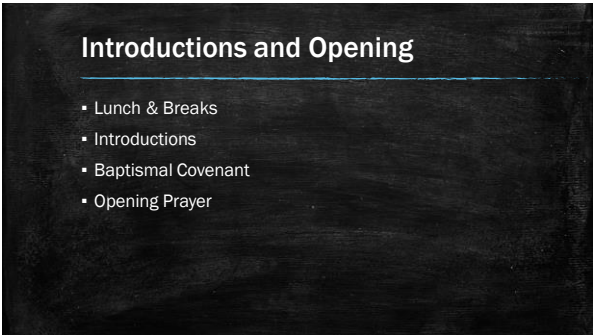
---

---

---

---

---



---

---

---

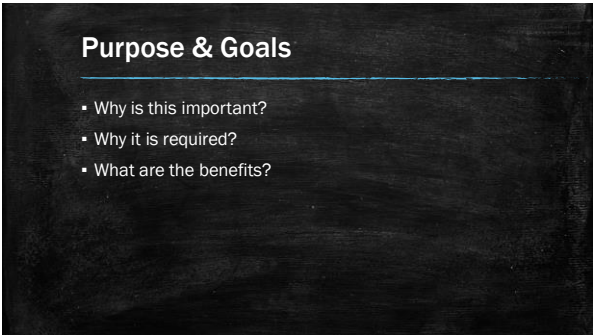
---

---

---

---

---



---

---

---

---

---

---

---

---

## Protection / Safe Sanctuary Policy

- Overview of Protection Policy
- Important Definitions
  - Child/Youth
  - Vulnerable Adult
  - Abuse
  - Neglect

---

---

---

---

---

---

---

## Guidelines – Part 1

- Who Can Volunteer
- Adequate Staffing
- Rule of Two
- Check In/Out Policy
- Transportation
- Overnights
- Counseling / Mentoring

---

---

---

---

---

---

---

## Guidelines – Part 2

- Good Touch/Bad Touch
- Building Use/Classrooms
- Restrooms
- Risks and Rewards



**Questions on Guidelines?**

---

---

---

---

---

---

---

## Best Practices

- When Does Our Policy Apply?
- Ministry with Children
- Ministry with Youth
- Ministry with Special Needs
- Ministry with Vulnerable Adults

---

---

---


---

---

---

---

## Reporting

 Content Warning 

---

---

---

---

---

---

---

## Warning Signs of Abuse

- Statistics about Abusers
- Physical Signs
- Behavioral Changes
- Parent Behavior
- Grooming Techniques of Predators

---

---

---

---

---

---

---

## Reporting

- What to do if a child/youth/vulnerable adult tells you about possible abuse?
- What to do if you witness abuse?
- Who are mandated reporters?
- Reporting suspected abuse or neglect
- Confidentiality
- Media

---

---

---

---

---

---

---

## Questions?

---

---

---

---

---

---

---

## Paperwork

---

---

---

---

---

---

---

## Paperwork & Next Steps

- Volunteer Interest Form with Photo Release
- Volunteer Driver Application
- *Safe Gatherings*
  - Why?
  - Registration
  - Background Check
  - Reference Check
  - Online Training



---

---

---

---

---

---

---

## Questions?

---

---

---

---

---

---

---